



GCLA

4th Floor Khoury Building
Michel Bustros Street
Beirut – Lebanon
+961 71 808889
+961 1 326063
www.gc-la.com

Unit 101 (Al Qada-2 Business Center)
7961 Takhassusi Branch Rd.
Al Muhammadiyah District
Riyadh 12363-3367 - KSA
+966 11 4500781
+966 53 0992700



WHO

WE

ARE

GCLA – Green Concepts Landscape Architects – is a master planning and landscape architecture firm with offices in Beirut (Lebanon) and Riyadh (KSA). Our team have practiced in landscape architecture for more than twenty-five years in the MENA region and offer our clients an exceptional quality of design detail and project management.

This capability document illustrates the range of projects and locations where we have operated and we continue to service the ever growing economies of the Levant, North Africa and Gulf regions.

What sets us apart

Above all, an awareness of what works and is sustainable.

- A desire to follow value engineering throughout the project from earliest concepts to practical completion
- Financial and management that enables us to resource quickly and effectively for large projects and to work with project financial imperatives
- Very experienced design staff with talent in different but complementary fields

The services offered include

- Master Planning for major infrastructure developments
- Landscape Master Planning Design and Project Management and Supervision of Landscape Projects
- Urban and Regional planning
- Landscape design and operation of plant nurseries for large projects
- Consultancy for Management of Established Landscapes
- Horticultural Technology
- Sustainable Landscape Technology
- Planning and Restoration of Heritage Sites
- Planning and Landscape Design for Resorts and Hotels

Planning

- Pre-Development feasibility Studies
- Development Control Strategies
- Land Use & Strategic Planning
- Site Analysis
- Master Planning
- Site Planning
- Design Guidelines
- Governing Approvals & Permits
- Feasibility Studies

Landscape Architecture

- Landscape Design
- Plant Material Selection
- Hardscape
- Water Feature Design
- Artwork & Sculpture Selection
- Construction Documentation
- Site Supervision

Urban Design

- Urban Land Use Studies
- Urban Planning
- Streetscape Design
- Site Design
- Urban Re-Development
- Urban Landscape & Hardscape
- Design Guidelines

Environmental Planning

- Environmental Impact Assessment
- Baseline Investigations
- Design Control Guidelines
- Pre- & Post-Development Policy Recommendations
- Short-Term and Long-term Impact Assessment
- Coordination of Marine and Terrestrial Ecosystem Studies
- Coordination of Water Quality Studies
- Sustainability Assessment Studies

Horticulture

- Plant Identification & Research
- Garden Design
- Agricultural and Soil Analysis
- Biodiversity Analysis
- Sustainable Ecosystem Studies
- Nursery Construction, Supervision & Management

Environmental Sustainability

- LEED, BREEAM and ESTIDAMA studies
- Environmental restoration and protection
- Materials consultancy & Soil science
- Water Management Strategies
- Carbon Accounting
- Climate Change Policies

WHAT

WE

DO!!

THE TEAM



Specialising in landscape architecture, horticulture town planning, project management and urban design, **GCLA** is a global design studio.

GCLA is recognised for its commitment to highest international standards of sustainability and for its creativity and regionally significant design.

The hallmarks of a **GCLA** project remain the same; a compelling design resolution through extensive research, particularly local and urban issues that underpin culture; a sensitive response to site and context without compromising intelligent solutions to sites. **GCLA** is committed to environmentally and culturally sustainable practises that ensure our clients are fully involved and informed.

The close and rewarding partnership we have with our client ensures that we are able to translate their aspirations into a tangible form with a responsible approach to value Engineering.

With offices in Beirut and Riyadh as well as projects in most GCC countries, **GCLA** is one of the leading Landscape design and planning practices in the region.

The **GCLA** team includes designers, engineers and scientists from around the world who provide valuable and contemporary insight into design solutions.

The team includes a broad range of disciplines with professional expertise in urban planning, landscape architecture, heritage consultation, horticulture, botany, MEP, Structural and Civil Engineering, multimedia and graphic design. Our local staff have a detailed knowledge of planning and regulatory requirements and environmental and heritage considerations.

In the last 40 years the worlds population in cities have increased ten fold, with a growth rate of more than a quarter of a million people per day; the equivalent of one city of London per month. By 2050 the world's population is expected to reach over 9 billion.

In the Middle East, the built environment is undergoing drastic changes, impacted by the pace of development, environmental issues, internationalisation and changing lifecycles. For designers, achieving environmental sustainability is an essential agenda. the challenge is to ensure that our projects offer creative, sustainable design solutions without losing a the sense of the country's roots.

GCLA is committed to sustainable design, from the initial site analysis through to an informed design response, our work is based on an understanding of and respect for ecological processes.

Our approach to Sustainability is holistic and not limited to narrow conceptions of sustainability such as LEED and BREEAM standards. Our work focusses on creating regenerative cyclical systems in the key areas of Water, Energy and Materials.

Whether its a project that involves the transformation of extensive areas of degraded land into valuable community and natural assets or the regeneration of parkland areas, **GCLA** is committed to creative and sustainable design solutions that foster biodiversity, minimize waste, enhance quality of life and seek to do more with less.

GLOBAL



SUSTAINABLE HORTICULTURE

The majority of Landscape Projects are defined by their approach to Soft Landscape elements. In the MENA region that is often the most poorly represented aspect of landscape design and the sustainability and longevity of planting is often harmed by poor plant selections

GCLA believes that planting must be designed to follow ecological associations present in nature and furthermore that planting should be designed in cognisance of the maintenance regimes common in the region. Most landscape maintenance is performed by unskilled labour and is generally limited to trimming, weeding and cleaning the planting areas. Elaborate maintenance requirements relying upon skilled gardener knowledge must therefore be avoided in favour of simple and more sustainable planting that relies largely upon native and naturalised plants. This should include:

- using less complex low maintenance, low water demand landscape, dominated by shade trees, extending over all public open space including streets and parks
- creating interesting features in key locations such as entrances and community centres where higher levels of maintenance can be justified
- using landscape spaces for useful infrastructural purposes (such as reed beds for water treatment) where the landscape is used much more efficiently and at a lower maintenance cost

GCLA is committed to sustainable and responsible horticulture and our work is always grounded in an understanding of and respect for ecological processes

GCLA is committed to creative and sustainable soft landscape design solutions that foster biodiversity, create a sense of place, minimise maintenance requirements to ensure longevity and again, seek to do more with less



Act



Conserve



Engage

WAYFINDING SIGNAGE +TYPOGRAPHY



GCLA offers innovative solutions to way finding systems through logical space planning and audible communications. Our understanding of spatial orientation needs means that we can offer our Client a comprehensive range of wayfinding systems from masterplans to directional signage.

Complete design evaluation and logical space planning

- We examine planning and design alternatives to ensure that the landscape and infrastructure are easily navigated and that maps and signs are easily read.

Developing Spatial Masterplans

- We examine the site and provide detailed recommendations to enhance existing way finding systems.

Designing Signage and Graphic Communication Tools

- We offer a wide variety of way finding systems including exterior and interior directional signs, lights, maps, sign message schedules, sign location plans, identification signs and other directional cues.

Planning Operational Systems

- We work closely with our Clients to develop the most comprehensive operational system needed to support successful navigational methods.

Providing Spatial Orientation Information

- We provide our Clients with the most up to date information on way finding systems.





selected projects

al raha beach . abu dhabi



al raha beach . abu dhabi

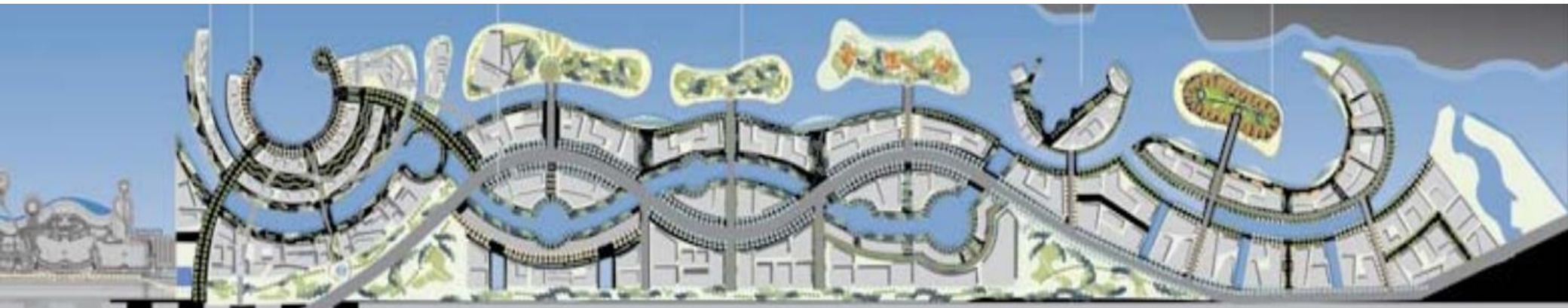
The Al Raha Beach Development in Abu Dhabi is a world class community and lifestyle project that will transform 8km of prominent water frontage into a large urban precinct that will comprise of almost a quarter of a million residents. Predicted to become one of the great water cities of the world, Al Raha was one of the most ambitious design project in the UAE and involved some of the worlds leading architects including Frank Gehry and Norman Foster; that are involved in designing buildings of international significance.

GCLA was involved on the design and development of over 100Ha of urban space including city parks, urban plazas, waterfront promenades, street boulevards and urban corridors, including the main transit corridor between Abu Dhabi and Dubai.

GCLA's team was made up of 32 highly skilled Landscape Architects and AutoCAD staff with academic qualifications in horticultural engineering, architecture, landscape, fine arts and urban planning.

Role: Design of Open Space & Public Realm

Project Size: 14 km²



abu dhabi international airport

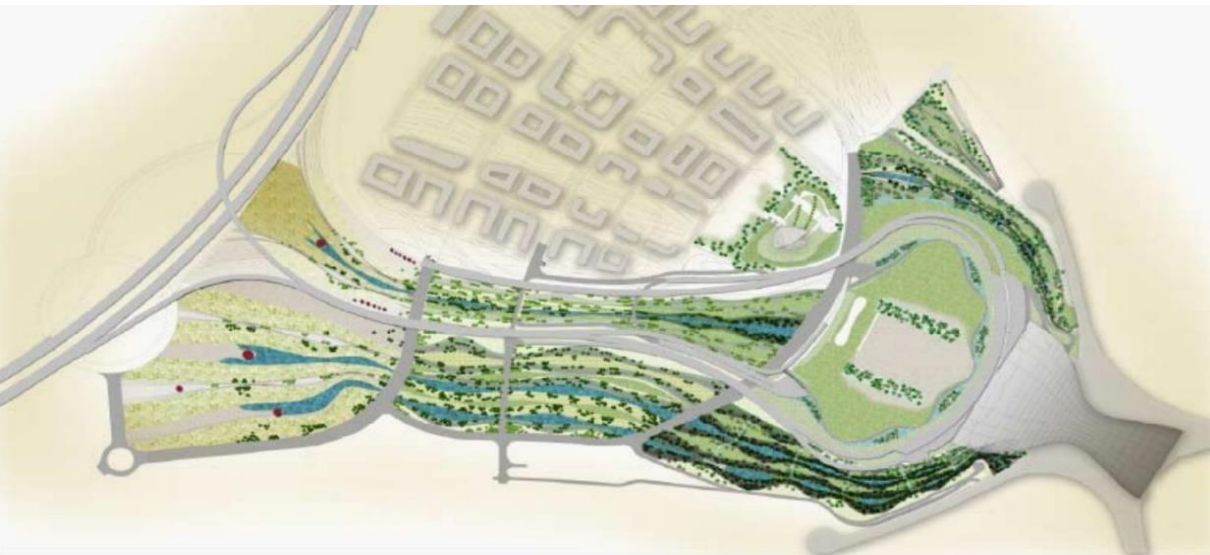


abu dhabi international airport

Abu Dhabi Airport's new Midfield Terminal will be one of the world's greatest airports. Architects Kohn Pederson Fox of the UK, commissioned our team to develop the landscape design as part of this stunning project. The landscape will flow like a dune field from the entrance to the airport and culminate in an oasis that appears to pass seamlessly from the building exterior to the interior. Passengers will feel they are within an oasis that offers a distinctive reminder of one of Abu Dhabi's great cultural traditions.

The Abu Dhabi Airport Midfield Terminal Landscape is based strongly upon the emergent notion of Landscape Urbanism. Taking cellular forms as the primary component it is proliferated across the site as a strategy for performance. It is designed as a vibrant synthetic landscape designed to perform as a modulated visual element perceived at speed and a landscape of performance utilising groundwater, grey water black water and a range of technologies to create a highly sustainable landscape.

Unlike most other airports the landscape is designed with a range of programmes to encourage pedestrian use and enjoyment.



Role: Design of Open Space & Public Realm

Project Size: 16 km²

doha airport city



doha airport city

Airport City is a 1300 ha site of the current airport in Doha.

GCLA together with Surbana were members of an invited competition for the masterplan of Airport City.

After being shortlisted the team won the second stage of the competition and was awarded the project to masterplan the site.

Our scheme rested upon the idea of the landscape as the primary structuring element of the masterplan. The masterplan establishes a grand canal and a network of 'park boulevards' and 'park avenues' to act as the structuring elements and pedestrian circulation system.

These are complimented by a series of vertically stacked landscape surfaces that multiply the landscape of Airport City.

Also employing a range of landscape-based systems to treat wastewater and generate energy the plan is a substantial effort towards advancing sustainability in Doha developments.

Role: Concept Design
Open Space & Public Realm

Project Size: 13 km²



kuwait university



kuwait university

The Campus master plan was conceived as a city on the banks of a river of landscape. Two linked campuses, one for men and the other for women, are separated by a wide oasis - a palm "forest" over 1 km in length. Faced by Faculty offices and Graduate Studies Research, it will be a quiet place of academic repose, a sanctuary and a place for contemplation that will become an icon for the university.

The landscape work included the development of the open space system in terms of sustainability, microclimate design, planting technology and the establishment of naturalized areas around the site. Significant focus was placed on the development of the design of the oasis. The design was greatly enhanced with the introduction of a water course that extends across the length of the oasis and enhanced with the palm trees grouped in clusters and the heavily landscaped berms creating a more naturalistic setting.

Client: SMEC

Role: Landscape Design Management

Project Size: 4.5 km²



business park - riyadh



Role: Design Management
Open Space & Public Realm

Project Size: 0.5 km²



business park - dammam



Role: Design Management
Open Space & Public Realm

Project Size: 0.5 km²



the pearl island



the pearl island

The “riviera of the Arabian Gulf” is a USD 2.5 billion man-made island which will provide over 40 kms of new coastline to the city of Doha. The landscape work included development of the open space system in terms of sustainability, microclimate design, planting technology and the establishment of naturalized areas around the site.

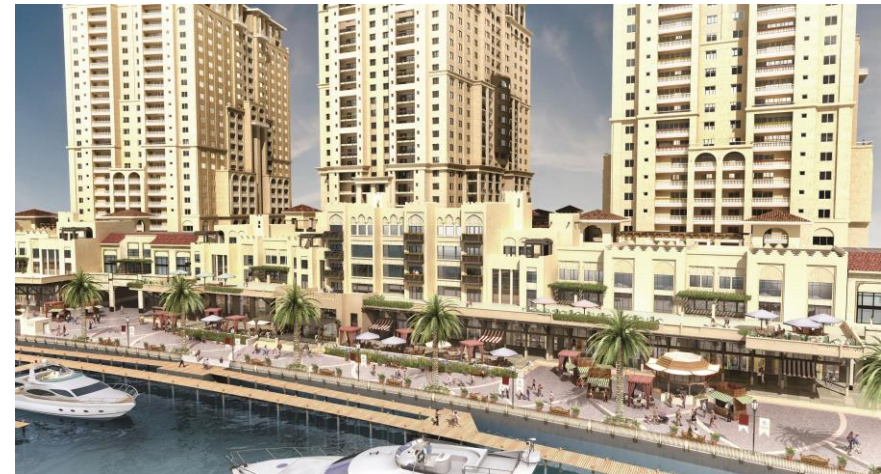
The main concern was choosing salt resistant plant and hardscape materials. Special attention had to be given to the fact that the island is open to strong winds from all sides. Recycling of sewage water had to be implemented to re-use as irrigation water. After being treated, the TSE had to be collected in five large man-made ponds which added aesthetic impact to the landscape.

Members of the **GCLA** team were in charge of the landscape detail design management and construction supervision of this super prestigious project.

Client: Cypark Ltd

Role: Landscape Detail Design Management &
Construction Supervision

Project Size: 4.5 km²



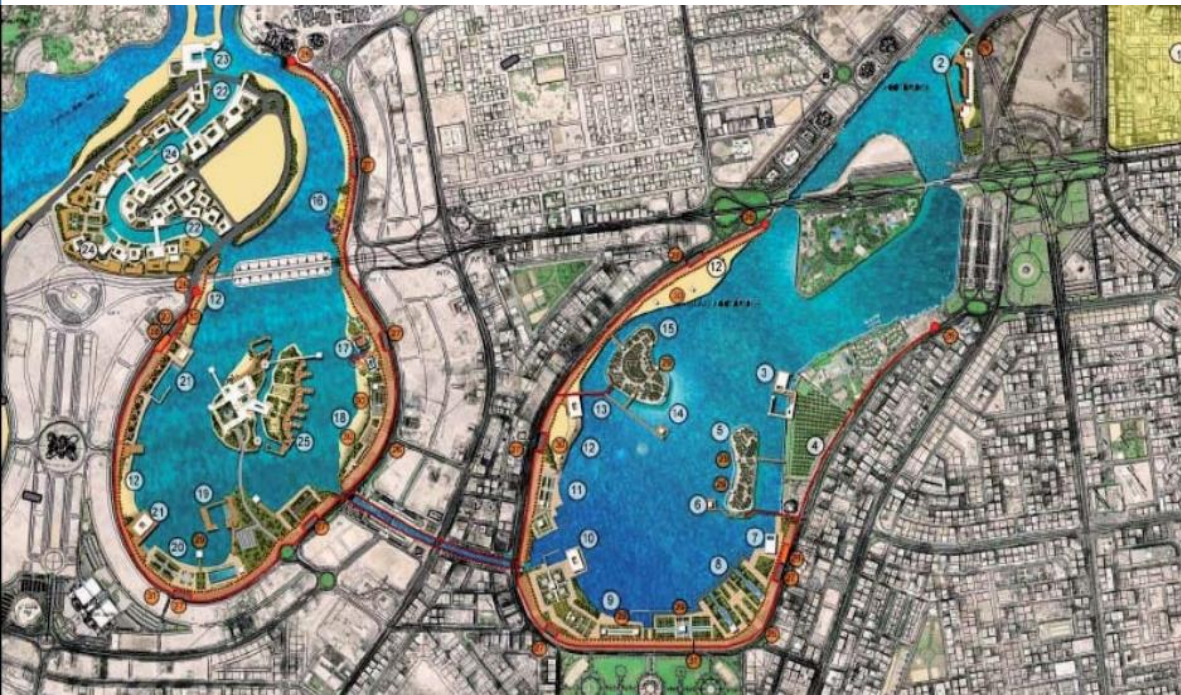
al qasbah . sharjah

The city of Sharjah is the third largest city in the UAE and is recognized as the country's cultural core. The Qasba Masterplan project aims to revitalize Sharjah's 25 km waterfront by redeveloping the areas in and around the city's iconic lagoons, and by linking this new development to the city's existing heritage districts.

GCLA's objective was to create a world leading arid climate urban waterfront that is sustainable, comfortable, beautiful, and functional. The unique challenge presented by this project will be the creation of an urban fabric that will speak to the city's distinctive character while addressing the area's urban and ecological challenges.

Role: Design of Open Space & Public Realm

Project Size: 25 km²



New Archaeological museum

New Archaeological Park
New Al Qasba

Boutique Hotel site with screening
vegetation for privacy

Grand Mosque with direct bridge
connection to Lagoon

Victoria School link
to lagoon sports
facilities
Watersports hub

Theme Gardens

white bay . umm al qwain

White Bay is an urban development situated in Umm Al Qwain, UAE and made up of a large inland parcel and two offshore islands. As the Landscape Architecture firm for the project, **GCLA** developed a model for sustainability through a comprehensive Masterplan that has taken an integrated and sustainable approach to the development of the site, addressing ecological, social, and economic issues. Design elements include mixed use infrastructure, sustainable transport systems, transit corridors and mixed- use green space including parklands and bush reserves.

In part, the design incorporates a strong set of land use principles and road hierarchies; urban and open space networks and has been designed in accordance with these primary guidelines.

- Innovative and high-quality urban form that assists the development of a strong and identifiable sense of place.
- Minimising the creation of waste and encourage recycling
- Maximising the recovery and recycling of resources from waste.
- Encouraging resource re-use
- Identifying and quantifying waste streams and developing appropriate management plans to achieve sustainability.
- Developing connectivity to transport nodes.
- Establishing dual use footpaths and bike paths.
- Promoting the use of recycled materials in building/ landscape architecture.
- Incorporating habitat corridors
- Managing water to create a vibrant and diverse community.
- Respecting diversity.
- Maintaining habitat quality and preserving nutrient and water cycles
- Creating built environments that foster both human and ecosystem health.

Client: Sunland - Dubai

Role: Design of Open Space & Public Realm

Project Size: 3.5 km²



2006 asian games village



2006 asian games village

The 15th Asian Games was held in Doha in December 2006. 10,000 athletes representing over 40 countries participated. During these two weeks the Capital was the center of the international sporting scene, with events occurring throughout the city.

Following the Asian Games the site became the Hamad Medical City bringing world-class health care to Qatar. New hospital facilities for Children, Orthopedics, Physical Medicine, Dialysis Centre, Day Surgery, a Trauma Centre and a Nursing Home were completed on the campus totaling approximately 1000 beds. A Nurses Hostel and Married Staff accommodation are located in the north of the campus.

The Ministry of Public Health, located within Hamad the Medial City, faces Al Istiqlal Street and the Corniche beyond. The development encompasses staff recreational facilities, shared services, two mosques and ample parking for staff and public.

Client: Fedcon Ltd.

Role: Landscape Design Management &
Construction Supervision

Project Size: 500,000 m²



dubai food city



Challenged to conceptualise the masterplan of a new Free Zone for Dubai known as 'Food City' **GCLA** set out to create a completely self-sustaining, zero carbon, zero waste, zero food importing zone on the Dubai coast. Rather than a Masterplan per se, it is a framework – a kit of parts that can and should be varied according to the landscape in which it sits.

A key factor beyond any aesthetic one is the interdependence of landscape systems be it energy, water or matter. Taking as our departure point the theory of landscape urbanism (where the landscape is cast as the ideological medium of sustainable urbanism) we approached the design of Food City with the intent to make it an off-the-grid, completely self-sufficient urban quarter. In our view, the marriage of landscapes and urbanism in the form of productive urban landscapes are an essential component to the resolution of food security issues and sustainability in its wider sense. Our concept was driven by the following ideas:

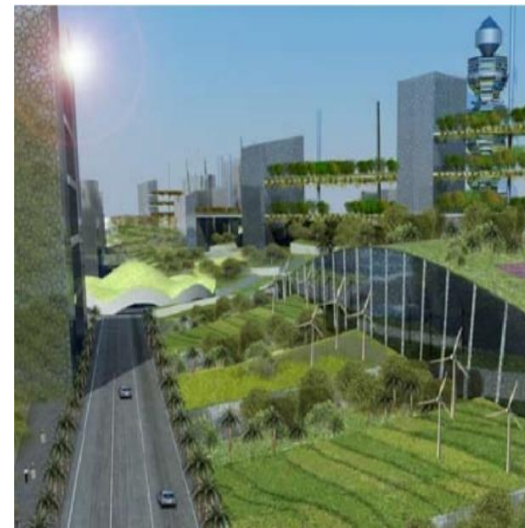
- 'Inverted landscapes' where the roof of the entire development was created as an artificial landscape formation of sweeping topography that becomes a continuous agricultural mat for the planting of traditional multi-culture oasis plants, public park as well as the grazing of livestock.
- 'Layered Landscapes' where the landscape is multiplied many times through the creation of vertically stacked landscape surfaces resulting in an overall green area exceeding that of an undeveloped site.
- 'Carbon Surplus' off the grid design where all systems relating to water, energy and matter are dealt with on-site through renewable means and realise surpluses to export from the site.

dubai food city

- 'Iconic Vertical Farm' creation of a 30 storey vertical farm capable of producing enough organic food for a population of 50,000 inhabitants within the development boundaries and including a beam-down concentrated solar array for energy generation and desalination.
- 'Seawater Greenhouses' where sea water is used through a solar humidification process to minimise potable water consumption, particularly for the vertical farm.
- 'Aquatic Farms' for cultivating, harvesting and research into fish and pearl oyster species of the Arabian Gulf created in the seafront and accessible from the public beaches.
- 'Thermal Conditioning' using shade, water, wind corridors and natural phenomena like ground-source cooling to create comfortable exterior environments at all times of the year.
- 'Zero-Waste City' where the key systems cycles governing sustainability (Energy, Water and Matter) were designed as fully circular systems ensuring no imports (or exports of waste).
- The Sustainability systems designed into Food City were divided into the three key categories of Energy, Water and Matter. The systems incorporated into the proposal are designed to fully cater for the basic needs of occupants, workers and visitors to Food City.

Role: Conceptual Design

Project Size: 6 km²



industrial cities - ksa



Modon Oasis is a program initiated by MODON (Saudi Industrial Properties Authority) geared towards the female employment in the Kingdom of Saudi Arabia.

The Program included a total of 13 cities ranging in size from 0.5 to 4 km². The first phase started with the following 5 industrial cities: Al-Hasa, Al-Jouf, Qassim, Hail and Jeddah Oasis



Role: Overall Program Management

Project Size: range between 0.5 km² and 4 km²



industrial city - dubai



Role: Overall Program Management

Project Size: range between 0.5 km² and 4 km²



tunis sports city



tunis sports city

Tunis Sports City is a city within a city situated near the ancient ruins of Carthage present day Tunis and will comprise of a truly unique sport themed residential development. The \$5 billion 256 hectares sporting development will include world class sporting venues, commercial and residential developments.

The Cedar district will be the first phase offering a variety of mixed living from luxury Villas, medium density dwellings and residential towers situated adjacent to a world class 18-hole golf course. The mixed- use areas include private gardens, forecourt and entries to commercial venues, restaurants, cafes, gymnasiums, landscaped podiums, meeting nodes, parks and streetscapes.

The landscape will compliment the vibrant and active lifestyle consisting of tennis courts, swimming pools, basketball courts, jogging track, exercise circuit, children maze and a variety of playgrounds to cater for all age groups.

Client: Bukhatir Group

Role: Design of Open Space & Public Realm

Project Size: 2.6 km²



iconic buildings - uae

Project: Crown Plaza Hotel – Abu Dhabi

Role: Landscape Design & Construction Management



Project: Emirates Towers - Dubai

Role: Landscape Design
Consultancy Services

Project: The Address Hotel - Dubai

Role: Landscape Construction
Drawings Management

Project: The Matrix Tower - Dubai

Role: Landscape Design Services

fashion village - riyadh

“The Gateway to Riyadh City”

Commercial and Business Center

Client: Kaden

Role: Landscape Design Management

Project size: 1 km²



al-bustan residential complex . riyadh

Role: Design of Open Space & Public Realm

Project Size: 1 km²



dmcc business park . dubai

The DMCC Business Park was a unique, exciting and challenging Project.

Situated at the western edge of Jumeirah Lakes Towers (JLT), the DMCC Business Park forms the business gate to the entire JLT Development. Two High Rise Towers, anchor the South East corner of the site, taking advantage of the views of Jumeirah Park Island's exclusive development. Scenic lakes and clustered housing, adjacent to beautiful park make up the design in a dramatic setting.

GCLA designed a contemporary landscape that merges the architecture with the landscape into a cohesive whole.

GCLA developed a model for sustainability in accordance with these guidelines:

- The design of innovative and high-quality forms that assists with the development of a strong and identifiable sense of place and respect for diversity
- Treating water for irrigation purpose or use of TSE
- Implementing Carbon Neutral measures
- Using onsite topsoil
- Designing roof gardens to improve the thermal performance of buildings, to extend roof materials durability and to counteract carbon emissions
- Minimizing water evaporation: shaded intimate water features
- Identifying and quantifying waste streams
- Developing appropriate management plans to achieve sustainability

Role: Design of Open Space & Public Realm

Project Size: 0.5 km²



khor fakkan & khor kalba

Khor Fakkan Corniche is located on a spectacular stretch of coastline that forms the Eastern Seaboard of the United Arab Emirates (UAE). Situated between Khor Kalba in the South and Dibba in the North, the Corniche circumvents the beach that has formed behind the deep waters of Khor Fakkan Bay. The project involves the re-development of the corniche area.

The objective is to create a unique landscape that offers a wide range of experiences using strong design elements. The design will include the provision of safe connections between the foreshore and the adjacent neighbourhoods through the strategic location of focal points along the Corniche.

The challenge for **GCLA** was to develop a singular design framework for the Corniche that reflects the uniqueness of the East Coast of the UAE landscape and the distinctive Corniche Architecture. The design framework that has been developed is derived from themes, patterns and elements that resonate from the vernacular of Khor Fakkan, particularly the Fishing industry, Environment and Trade.

Role: Design of Open Space & Public Realm

Project Size: 2.3 km²



clear village sustainable city

UV21 was the runner up in the Open International Design Competition conducted in Amsterdam calling for the vision of the Sustainable Village of the future.

Designed as a development of the Food City proposals, all water, energy and waste systems were designed as totally cyclical systems with off the grid development and provision of food, water and materials on site.

The brief called for an expression of the vision of the 21st Century Sustainable Living community. **GCLA**'s vision called for a landscape within a landscape and an environment embedded in its context.

Out of several hundred entries **GCLA**'s proposal was awarded the first runner-up prize.

Role: Conceptual Design

Project Size: 5.5 km²



mixed-use developments

While working as landscape subconsultants for other design firms, **GCLA** staff managed the design of many mixed-use developments comprising of residential, commercial and industrial communities.

These communities were conceived following comprehensive guidelines in order to achieve high aspirations for their economic usability and design qualities as well as to reduce the environmental impact on their surrounding areas.

Role: Design Management
Open Space & Public Realm

Projects Size: ranging from 0.5 to 4 km²



'momra' design guidelines

In 2012, **GCLA** developed the Design Guidelines for landscaping for MOMRA, the Ministry of Municipalities & Rural Affairs in Saudi Arabia.

These Design Guidelines are still in use today.

Client: MOMRA

Role: Landscape Design Guidelines Development



mumbai airport - india



Client: GVK

Role: Landscape Program Management

Project size: 5 million m²



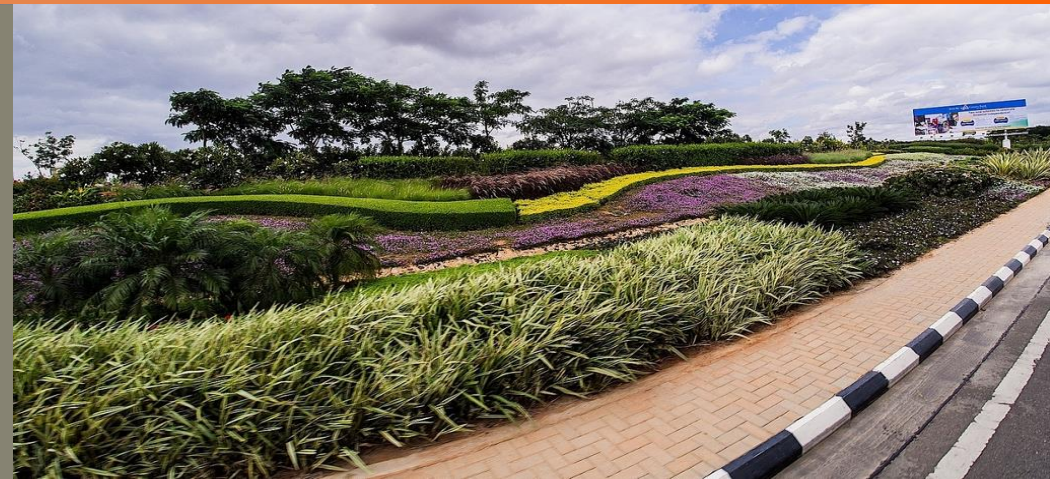
bangalore airport - india



Client: GVK

Role: Landscaping Program Management

Project size: 3 million m2



GCLA

4th Floor Khoury Building
Michel Bustros Street
Beirut – Lebanon
+961 71 808889
+961 1 326063
www.gc-la.com

Unit 101 (Al Qada-2 Business Center)
7961 Takhassusi Branch Rd.
Al Muhammadiyah District
Riyadh 12363-3367 - KSA
+966 11 4500781
+966 53 0992700